

STANDARD
& POOR'S

Compustat Research Insight

企業財務分析資料庫

NA 北美版—North America
NA 回溯版—NA Backdata
GV 全球版—Global Vantage

版權所有，未經授權與許可，禁止擷取、轉載、公開
放在網頁等等



漢珍數位圖書股份有限公司
TRANSMISSION BOOKS & MICROINFO CO., LTD.

Company

財務報表

財務數據

公司比較

歷史資料

Industry

產業分析

同產業公司
比較

Index

指數分析



收錄範圍—NA 北美版

❖ 收錄區域：NA North America 北美版

❖ 收錄時間：回溯至1979年

❖ 收錄公司：

- 上市公司(\$C)：9,118+

- 下市/停止交易公司(\$R)：23,386+

- 加拿大公司(\$T)：6,255+

- ADR公司(\$ADR)：497



❖ 涵蓋範圍：

- NYSE
- ASE
- NASDAQ
- OTC

❖ 收錄數據

- Data Items、Ratios、Growth Rates
- 停業公司**132**個Data Items

❖ 更新時間：**每季**寄送 DVD

收錄範圍—NA 回溯版

另行訂購

- ❖ 收錄區域：NA Backdata 回溯版
- ❖ 收錄時間
 - 年報回溯至 1950 年
 - 季報、月報回溯至 1962 年
- ❖ 收錄公司：3,700 家的公司資料
- ❖ 收錄數據：69 個 Fundamental Items
- ❖ 更新時間：每年寄送 DVD



收錄範圍—GV 全球版

- ❖ 收錄區域：GV Global Vantage 全球版
- ❖ 收錄時間：20 年
- ❖ 收錄公司：
 - 上市公司(\$G+\$F)：45,954+
 - 下市/未上市公司(\$D+\$X)：36,132+
- ❖ 收錄指數(Indices)：98 種當地市場指數(Local Market Indices)
- ❖ 收錄數據
 - 近1000 個 Data Items，新增50種Data Items。
- ❖ 更新時間：每季寄送DVD

【特殊資料介紹】

North America Data Additions





North America Data Additions

- ❖ Compustat Analysts' Notes
- ❖ 七大產業分析資料
- ❖ Additional Data Items



Compustat Analysts' Note

❖ 紀錄個別 item 資料標準化的方法

❖ Excel Template

- Income Statement
- Balance Sheet
- Cash Flow
- Ratio Report

❖ 收錄年代

- 年資料：1989 年迄今
- 季資料：1998 年迄今

[Go To Income Statement](#)[Go To Balance Sheet](#)[Go To Cash Flow](#)[Go To Ratio Report](#)

GENERAL MOTORS CORP

Ticker: GM

SIC Code: 3711

ANNUAL INCOME STATEMENT

MOTOR VEHICLES & CAR BODIES	Dec07	Dec06	Dec05	Dec04	Dec03
Sales	181,122.000			000	182,005.000
Cost of Goods Sold	157,541.000			00	136,582.000
Gross Profit	23,581.000			00	45,423.000
Selling, General, & Administrative Expense	14,412.000			00	21,008.000
Operating Income Before Depreciation Depreciation, Depletion, & Amortization	9,169.000			00	24,415.000
Operating Profit	9,513.000	10,950.000	15,769.000	14,152.000	13,978.000
Interest Expense	(344.000)	13,515.000	(3,552.000)	12,081.000	10,437.000
Non-Operating Income/Expense	3,307.000	16,945.000	15,768.000	11,980.000	9,464.000
Special Items	1,563.000	(1,333.000)	2,984.000	3,407.000	3,317.000
Pretax Income	(3,641.000)	@CF	@CF	(1,620.000)	(697.000)
Total Income Taxes	(5,729.000)	(4,763.000)	(16,336.000)	1,888.000	3,593.000
Minority Interest	37,162.000	(2,785.000)	(5,878.000)	(916.000)	731.000
Income Before Extraordinary Items & Discontinued Operations	406.000	@CF	@CF	@CF	@CF
Preferred Dividends	(43,297.000)	(1,978.000)	(10,458.000)	2,804.000	2,862.000
Available for Common	0.000	0.000	0.000	0.000	0.000
Adjusted Available for Common	(43,297.000)	(1,978.000)	(10,458.000)	2,804.000	2,862.000
Extraordinary Items	0.000	0.000	(109.000)	0.000	0.000
Discontinued Operations	0.000	0.000	0.000	0.000	0.000
Adjusted Net Income	4,565.000	(1,978.000)	(10,567.000)	2,804.000	0.000

Reduced by an amount of depreciation
which should be allocated to SGA





特定產業分析資料

❖ 提供特定產業之特定分析資料

包含**180**種年資料，回溯至**1999**年，及**147**種季資料，回溯至**2002**年

- 航空業 (Airlines)
- 醫療業(Health Care Facilities)
- 營造業(Homebuilding)
- 零售業(Retail)
- 石油及天然氣業(Oil & Gas Explor/Production、Oil & Gas Refining & Marketing)
- 健康保險業照護(Managed Health Care)
- 礦業(Mining)
- 飯店及度假村業者 (Lodging)
- 賭場業者 (Gaming)

Industry Specific - Airline (Annual)

Jet Blue航空 年度報表

JETBLUE AIRWAYS CORP

Ticker: JBLU

GICS Sub-Industry: Airlines(20302010)

	Dec16	Dec15	Dec14	Dec13	Dec12
Revenue					
Passenger Revenue	6,013.000	5,893.000	5,343.000	4,971.000	4,550.000
Statistics					
Revenue Passengers Carried	38,263	35,101	32,078	30,463	28,956
Revenue Passenger Miles (RPMs)	45,619,000	41,711,000	37,813,000	35,836,000	33,563,000
Revenue Passenger Kilometers (RPKs)	@NA	@NA	@NA	@NA	@NA
Available Seat Miles (ASMs)	53,620,000	49,258,000	44,994,000	42,824,000	40,075,000
Available Seat Kilometers (ASKs)	@NA	@NA	@NA	@NA	@NA
Passenger Load Factor	85	85	84	84	84
Break-Even Load	@NA	@NA	@NA	@NA	@NA
Yield & Related (Cents)					
Passenger Revenue p/RPM	13.18	14.13	14.13	13.87	13.55
Passenger Revenue p/ASM	11.21	11.96	11.88	11.61	11.35
Total Revenue p/ASM	12.37	13.03	12.93	12.71	12.43
Operating Expenses p/ASM	9.920	10.560	11.780	11.710	11.490
Fuel					
Fuel Consumed (Gallons)	760,000	700,000	639,000	604,000	563,000
Avg Fuel Price p/Gallon (Cents)	141	193	299	314	321
Fuel Expense	1,074.000	1,348.000	1,912.000	1,899.000	1,806.000
Aircraft					
Aircraft Owned	174	155	137	130	116
Aircraft Leased	53	60	66	64	64
Total Aircraft In Service	227	215	203	194	180
Avg Age of Aircraft (Years)	8.90	8.30	7.80	7.10	6.70





Additional Data Items

- ❖ **SFAS 158 Pension & Postretirement Data**
(財務會計標準報表第158號)：提供關於退休金及其他退休後福利之財務資料
- ❖ 財會準則 **SFAS157/159**

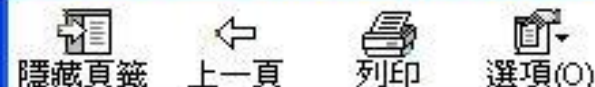
【產業分類】





產業分類代碼

- ❖ **SIC Code** : Standard Industrial Classification Code 標準產業分類編碼
- ❖ **GICS Code** : 標準普爾產業分類編碼
- ❖ **NAICS** : The North American Industry Classification System 北美工業分類系統



內容(C) 索引(I) 搜尋(S)

鍵入所要尋找的關鍵字(W):

SIC Codes by Industry

- SIC
- SIC Code - Historical
- SIC Code(s) - All Products and Segments
- SIC Codes - Business Segment (Primary and
- SIC Codes by Industry**
- SIC Codes in Numerical Order
- SICALL
- SICH
- SICPS
- SICS
- SID
- Silver Cash Cost
- Silver Production
- Silver Production Cost
- Silver Proven and Probable Reserve
- Silver Proven and Probable Reserve - Footc
- Silver Reserve Average Ore Grade
- Silver Reserve Average Ore Grade - Footnc
- Silver Sales Price
- SIV
- SIVQ
- SIVQP#M
- SIVQPIT#M
- Small-Cap Model - Decile
- Small-Cap Model - Score
- SMCAP
- SMCAPS

顯示(D)

4-digit code

SIC Codes by Industry

Industry	SIC Code
Abrasive Products	3291
Abrasive, Asbestos, Misc Minrl	3290
Accident and Health Insurance	6321
Accident, Health Ins, Med Plan	6320
Account, Audit, Bookkeep Svcs	8720
Account, Audit, Bookkeep Svcs	8721
Adhesives and Sealants	2891
Adjustment and Collection Svcs	7322
Admin-Economic Programs	9600
Admin-Educational Programs	9410
Admin-Educational Programs	9411
Admin-Environ Quality, Housng	9500
Admin-Environmental Quality	9510
Admin-Gen Economic Programs	9610
Admin-Gen Economic Programs	9611
Admin-Housing Programs	9531
Admin-Housing, Urban Develop	9530
Admin-Human Resource Program	9400
Admin-Public Health Programs	9430
Admin-Public Health Programs	9431

Look for Industry Code (2) : GICS Codes

鍵入所要尋找的關鍵字 (W):

8-digit code



GICS Codes

GICS Economic Sector 10 Energy

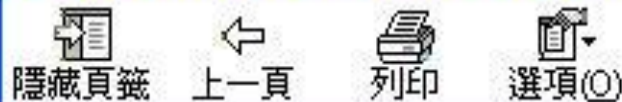
Industry Group	Industry Group Code	Industry	Industry Code	Sub-Industry	Sub-Industry Code	Sub-Industry Description
Energy	1010	Energy Equipment & Services	101010	Oil & Gas Drilling	10101010	Drilling contractors or owners of drilling rigs that contract their services for drilling wells.
				Oil & Gas Equipment & Services	10101020	Manufacturers of equipment, including drilling rigs and equipment, and providers of

Industry Group	Industry Group Code	Industry	Industry Code	Sub-Industry	Sub-Industry Code	Sub-Industry Description
Energy	1010	Energy Equipment & Services	101010	Oil & Gas Drilling	10101010	Drilling contractors or owners of drilling rigs that contract their services for drilling wells.

- GLP
- GLPQ
- GNI10
- GNI3
- GNI5
- Gold Cash Cost
- Gold Production
- Gold Production Cost
- Gold Proven and Probable Reserve
- Gold Proven and Probable Reserve - Footn
- Gold Reserve Average Ore Grade
- Gold Reserve Average Ore Grade - Footnot
- Gold Sales Price
- Goodwill
- Goodwill - Quarterly
- Goodwill Amortization

				**Oil & Gas prior to 5/1/2005		significant activity in either refining, marketing and transportation, or chemicals.
				Oil & Gas Exploration & Production	10102020	Companies engaged in the exploration and production of oil and gas not classified elsewhere.
				Oil & Gas Refining & Marketing	10102030	Companies engaged in the refining and marketing of oil, gas and/or refined products not classified in the Integrated Oil & Gas or Independent Power Producers & Energy Traders Sub-Industries.

Look for Industry Code (3) : NAICS Codes



內容(C) 索引(N) 搜尋(S)

鍵入所要尋找的關鍵字(W):

NAICS by Code

- Multiple Regression Alpha Calculation
- Multiple Regression Beta Calculation
- Multiple Regression Standard Error Calculat
- NAICS
- NAICS by Code**
- NAICS Classification System
- NAICS in Alphabetical Order
- NAICSH
- NASDAQ
- NASDAQ NMS Identification Code
- NAVM
- NCO
- NCONQ
- NCOQ
- NCOQP#M
- NCOQPIT#M
- Nebraska (31)
- Net Asset Value
- Net Charge-Offs
- Net Charge-Offs - Quarterly - Concept - Poir

顯示(D)

NAICS by Code

NAICS Code

Description

11	Agriculture, Forestry, Fishing and Hunting
111	Crop Production
1111	Oilseed and Grain Farming
111110	Soybean Farming
111120	Oilseed (except Soybean) Farming
111130	Dry Pea and Bean Farming
111140	Wheat Farming
111150	Corn Farming
111160	Rice Farming
11119	Other Grain Farming
111191	Oilseed and Grain Combination Farming
111199	All Other Grain Farming
1112	Vegetable and Melon Farming
111211	Potato Farming
111219	Other Vegetable (except Potato) and Melon Farming

【操作説明】

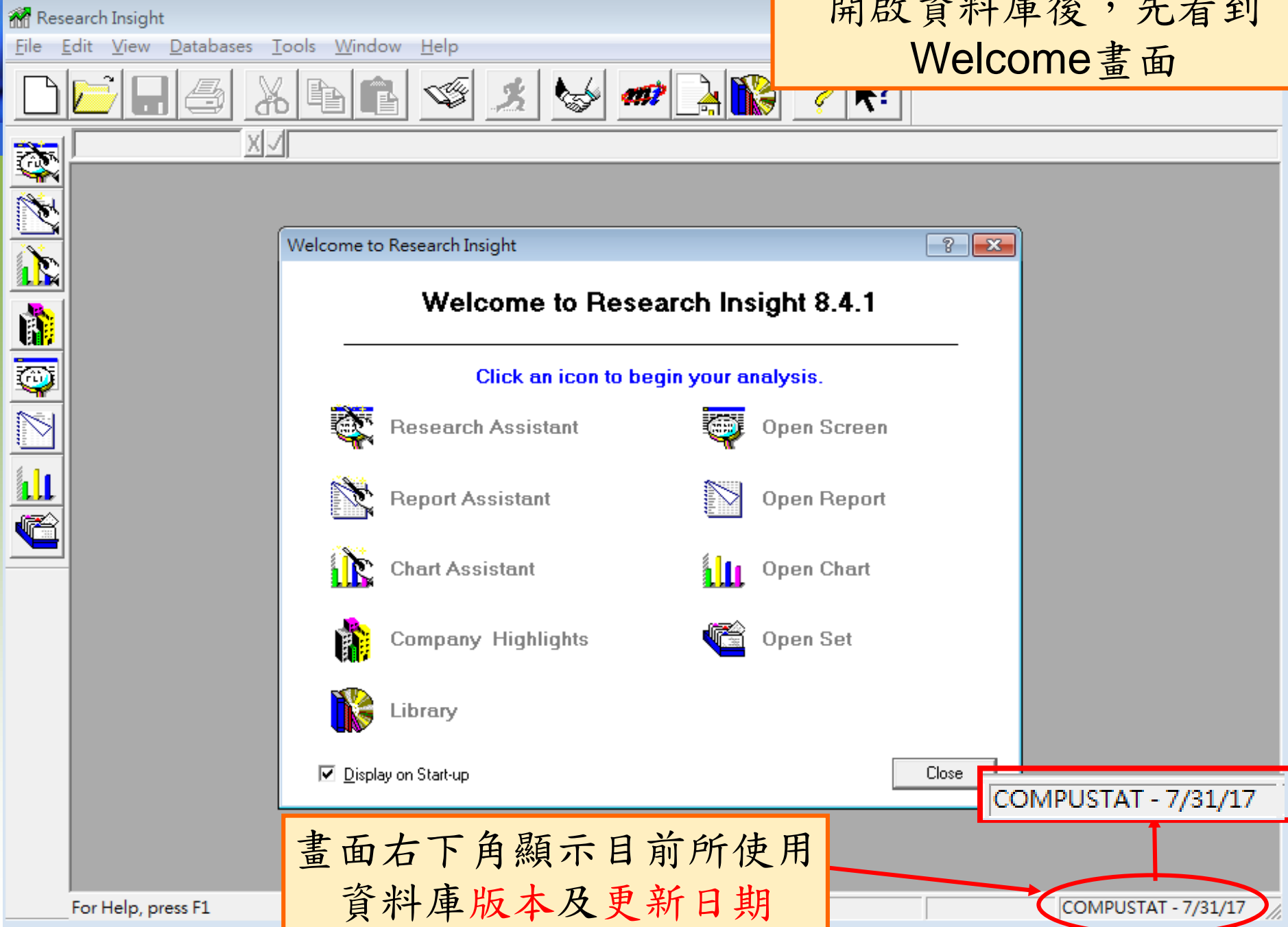




基本操作步驟

- ❖ 如何切換北美版和全球版資料庫？
- ❖ 如何開啟公司財務報表並輸出？
- ❖ 如何自訂公司群組及開啟公司群組？
- ❖ 如何自訂Data Items及查詢Data Items定義？
- ❖ 如何在Excel中使用資料庫？

開啟資料庫後，先看到
Welcome畫面

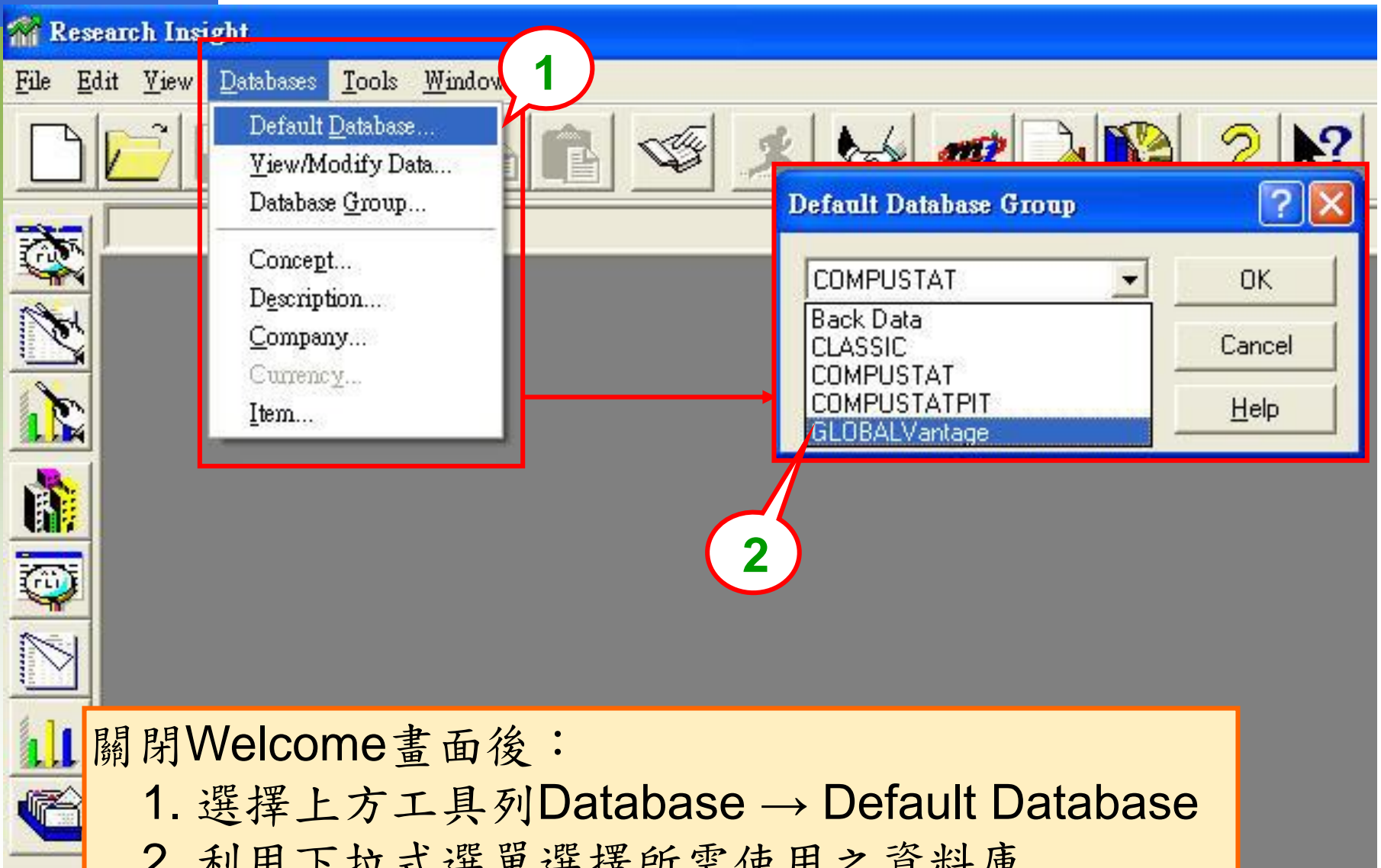


畫面右下角顯示目前所使用
資料庫版本及更新日期

COMPUSTAT - 7/31/17

COMPUSTAT - 7/31/17

如何切換北美版和全球版資料庫？



The screenshot shows the Research Insight software interface. The 'Databases' menu is open, and the 'Default Database Group' dialog box is displayed. The dialog box contains a list of database groups: COMPUSTAT, Back Data, CLASSIC, COMPUSTAT, COMPUSTATPIT, and GLOBALVantage. The 'GLOBALVantage' option is selected. A red box highlights the 'Default Database Group' dialog box, and a red circle with the number '2' points to it. Another red circle with the number '1' points to the 'Default Database...' option in the 'Databases' menu.

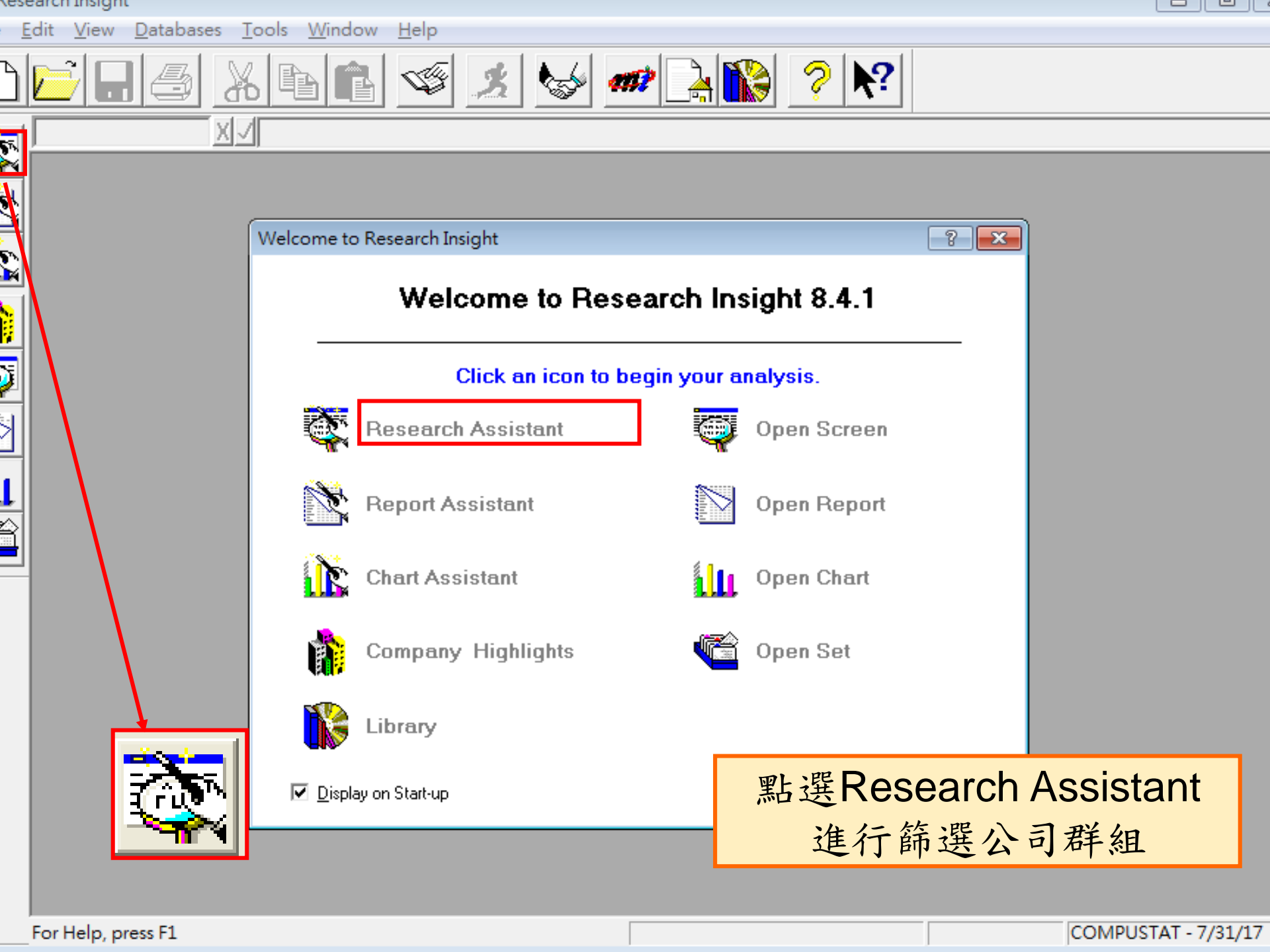
關閉Welcome畫面後：

1. 選擇上方工具列Database → Default Database
2. 利用下拉式選單選擇所需使用之資料庫



基本操作步驟










- ❖ 如何切換北美版和全球版資料庫？
- ❖ 如何套用公司財務報表並輸出？**
- ❖ 如何自訂公司群組及開啟公司群組？
- ❖ 如何自訂Data Items及查詢Data Items定義？
- ❖ 如何在Excel中使用資料庫？



Welcome to Research Insight

Welcome to Research Insight 8.4.1

Click an icon to begin your analysis.

-  **Research Assistant**
-  Report Assistant
-  Chart Assistant
-  Company Highlights
-  Library
-  Open Screen
-  Open Report
-  Open Chart
-  Open Set

Display on Start-up

點選 Research Assistant
進行篩選公司群組



點選Look Up
輸入所需查詢的公司名稱
或輸入Ticker查詢

Companies

|

Find Similar Companies

- Economic Sector
- GICS-Sector
- GICS-Group
- GICS-Industry
- GICS-Sub-Industry
- Country
- Don't Find Similar Companies

Period Selection
Current Period

Open Screen... Clear

Classic View Reset

Save Screen

Save Save As

Initial Set

(none)

Population Particulars | Valuation | Market | Instit

Industry Sector Code = [] 1001-Agricultural []

Non-ADR Company = [] True []

Look Up

Companies

Select Company Category

- \$A CS Aggregate
- \$ADR
- \$C CS Active**
- \$I CS Indexes Active
- \$NAS_100 NASDAQ
- \$NAS_FINL NASDAQ
- \$R CS Research
- \$SP_100
- \$SP_400BG Barra Gr
- \$SP_400BV Barra Val
- \$SP_500
- \$SP_500BG Barra Gr
- \$SP_500BV Barra Val
- \$SP_600BG Barra Gr
- \$SP_600BV Barra Val

Select Companies

- MICROSOFT
- MICROISLET INC
 - MICROMEM TECHNOLOGIES INC
 - MICROMET INC
 - MICRON TECHNOLOGY INC
 - MICRONETICS INC
 - MICROPAC INDUSTRIES INC
 - MICROS SYSTEMS INC
 - MICROSEMI CORP
 - MICROSOFT CORP**
 - MICROSTRATEGY INC
- MSFT

Paste

Copy to Clipboard

Segments...

Display by:

Name

Ticker

Find Text:

|

Find Next

Close

Help

Research Assistant - Step 1 (Money Management)

初步選擇公司後，選擇下一步即可

Companies

Look Up

Initial Set

MSFT



(none)

Change Set

Find Similar Companies

Economic Sector
GICS-Sector
GICS-Group
GICS-Industry
GICS-Sub-Industry
Country
Don't Find Similar Companies

Period Selection

Current Period

Open Screen...

Clear

Classic View

Reset

Save Screen

Save

Save As

Population Particulars | Valuation | Market | Institutional Hold

Industry Sector Code

=

1001-Agricultural

Non-ADR Company

=

True

Active Profitable Co

=

True

Country of Incorporation

=

0-United States of

GICS Economic Sector

=

10-Energy

GICS Sub-Industry

=

10101010-Oil & G

Right-click on description for definition of indicator

Customize...

< 上一步(B)

下一步(N) >

取消

說明



新增其他公司

Company List

Company

2

MICROSOFT CORP
YAHOO INC

Display Mode

Names

Tickers

Save Set

Save...

Save As...

Reset

Save Screen

Save...

Save As...

Remove Company

Market
Insight



Add Company to set



Look Up

Add Company

Added Companies

YAHOO INC

Remove Company from Added
list

儲存公司群組(.set)

Removed Companies

Restore Company

< 上一步(B)

下一步(N) >

取消

說明



Report Assistant Create a custom report based on the companies that passed your screening criteria.



Chart Assistant Create a custom chart based on the companies that passed your screening criteria.



Open Report Open a pre-defined report based on the companies that passed your screening criteria.

開啟範本財報



Open Chart Open a pre-defined chart based on the companies that passed your screening criteria.



Company Highlights Run the Company Highlights report for the companies that passed your screen.

Finish Return to the Research Insight desktop.

< 上一步(B)

下一步(N) >

取消

說明



Open Use right mouse click to edit selected item.

- [-] S&P Reports
 - [-] Balance Sheets
 - Annual Balance Sheet - 11 Years
 - Annual Balance Sheet - 5 Years
 - Annual Balance Sheet 5 Years with Footnotes
 - Annual Balance Sheet - 5 Years with Footnotes & Descs
 - Quarterly Balance Sheet
 - Quarterly Balance Sheet with Footnotes
 - Quarterly Balance Sheet with Footnotes & Descs
 - Year-To-Year Percent Change Balance Sheet
 - [+] Cash Flow Statements
 - [+] Combined Reports
 - [+] Common Size Statements
 - [+] Company Highlights
 - [+] Comparative Reports

選取範本財報

Screen Open mode

Research Assistant Classic View

< 上一步(B) 完成 取消 說明



儲存報表數據資料(*.txt)，
且設定『欄位間距的符號』
以便轉到會計軟體



Show

Formula

Report

Chart

Report & Chart

Companies

Ticker

Name

Prev Next

MSFT001
YHOO001

另存新檔

儲存於

我最近的文件

桌面

我的文件

我的電腦

網路上的芳鄰

Description:

Read Only

All Companies Current Company

Text Options

Column Delimiter

Tab

Comma

Space

Semicolon

Custom

Use Quotes

Use Labels

Fixed Field

OK

Cancel

Help

儲存(S)

取消

Text Options...

.000
.000
.000
.000
.140

.00
.8
.0
.0



基本操作步驟

- ❖ 如何切換北美版和全球版資料庫？
- ❖ 如何套用公司財務報表並輸出？
- ❖ 如何開啟公司群組？**
- ❖ 如何自訂Data Items及查詢Data Items定義？
- ❖ 如何在Excel中使用資料庫？

Research Assistant - Step 1 (Money Management)

Companies

Look Up

Initial Set

|



(none)

1

Change Set

Find Similar Companies

Economic Sector

GICS-Sector

GICS-

GICS-

GICS-

Count

Don't

Period

Current

Open S

Classi

Save S

Population Particulars

Valuation

點選Change Set

Look Up

Sets

Select Set Category

All

Predefined

Saved

3

Select Sets

\$A CS Aggregate

\$ADR

\$C CS Active

\$CG CS Geographic Segment

\$CI CS Active Issue

\$CS CS Business Segment

\$I CS Indexes Active & Research

\$II CS Index Issue

\$NAS_100 NASDAQ 100

\$NAS_FINL NASDAO Financial

Paste

Copy to Clipboard

Browse...

選擇公司群組後，點選
Paste貼上，回到主畫
面點選下一步即可開啟
公司群組

Close

說明



基本操作步驟

- ❖ 如何切換北美版和全球版資料庫？
- ❖ 如何套用公司財務報表並輸出？
- ❖ 如何自訂公司群組及開啟公司群組？
- ❖ **如何自訂Data Items及查詢Data Items定義**
- ❖ 如何在Excel中使用資料庫？



Report Assistant
自訂報表

Create a custom report based on the companies that passed your screening criteria.



Chart Assistant

Create a custom chart based on the companies that passed your screening criteria.



Open Report

Open a pre-defined report based on the companies that passed your screening criteria.



Open Chart

Open a pre-defined chart based on the companies that passed your screening criteria.



Company Highlights

Run the Company Highlights report for the companies that passed your screen.

Finish

Return to the Research Insight desktop.

< 上一步(B)

下一步(N) >

取消

說明

選擇報表格式

Report Assistant - Step 1 (Money Management)

Current Time Period

Items vs Companies

Companies vs Items

Historical Analysis

Items vs Companies

Items vs Time For a Company

Time vs Items For a Company

Blank Report

EXAMPLE

	Market Value - Annual		
Company Name	1997	1996	1995
Houghton Mifflin	1,114.296	922.713	861.410
McGraw-Hill Co	6,775.262	5,312.864	4,641.956
Readers Digest	2,544.813	2,062.992	1,540.923

Company Count

511

< 上一步(B) 下一步(N) > 取消 說明

歷史財務數據

設定年代後完成報表

Report Assistant - Step 3 (Money Management)

Periods

Select the beginning and ending periods for the report

Beginning

-3Y

Ending Period

0Y

Select the format for period display

- Relative
- Absolute
- Calendar

Alignment

The items you selected for the report have different periodicities.

Select the alignment that will be applied to all items in the report.

- Annual
- Quarterly
- Monthly
- Weekly
- Daily

The available alignment options are based

- **Relative** – Ex : -1Y至0Y (當年+回溯一年)
- **Absolute** – Ex : Y96至Y97 (會計年度/Jul96至Jun97)
- **Calendar** – Ex : C96至C97 (Jan1996-Dec1997)

< 上一步(B)

完成

取消

說明



基本操作步驟

- ❖ 如何切換北美版和全球版資料庫？
- ❖ 如何套用公司財務報表並輸出？
- ❖ 如何自訂公司群組及開啟公司群組？
- ❖ 如何自訂Data Items及查詢Data Items定義？
- ❖ 如何在**Excel**中使用資料庫？

Excel中使用RI查詢報表

The screenshot shows the Microsoft Excel 2003 interface. The menu bar includes '檔案(F)', '編輯(E)', '檢視(V)', '插入(I)', '格式(O)', '工具(T)', '資料(D)', '視窗(W)', 'S&P', and '說明(H)'. The '說明(H)' menu is open, showing options: 'Welcome to Research Insight', 'Research Assistant', 'Report Assistant', 'Chart Assistant', and 'Run Assistant'. The 'Welcome to Research Insight' dialog box is open, displaying the title 'Welcome to Research Insight 8.4.1' and the instruction 'Click an icon to begin your analysis.' The dialog box contains six icons with corresponding labels: 'Research Assistant', 'Report Assistant', 'Chart Assistant', 'Open Screen', 'Open Report', and 'Open Chart'. At the bottom of the dialog box, there is a checkbox for 'Display on Start-up' which is checked, and a 'Close' button. In the background, the Excel toolbar has a red circle around the Research Insight icons.

在儲存資料時，請先點選『Unlink Arrays』，將欄位所套用的公式轉換成數值

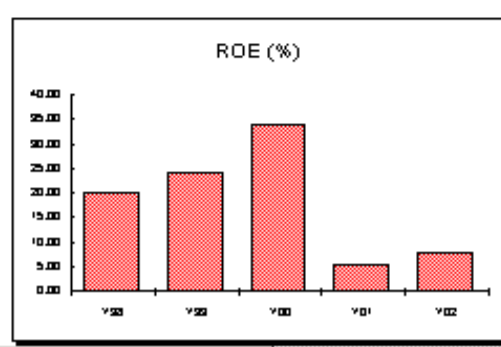
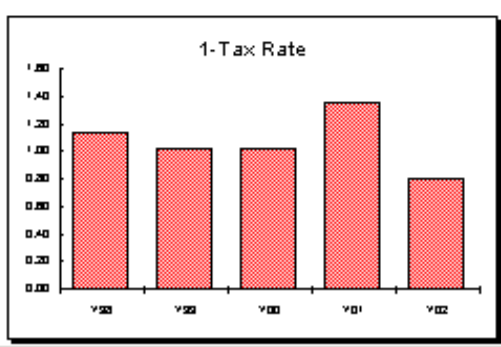
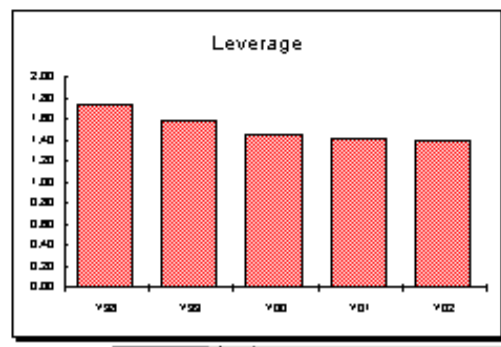
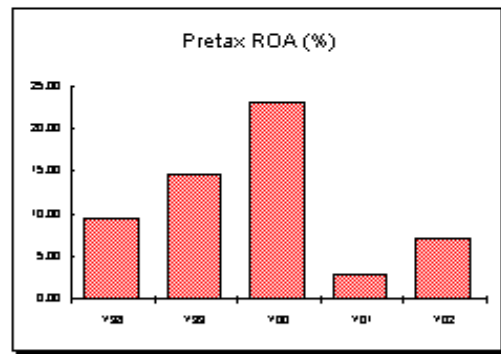
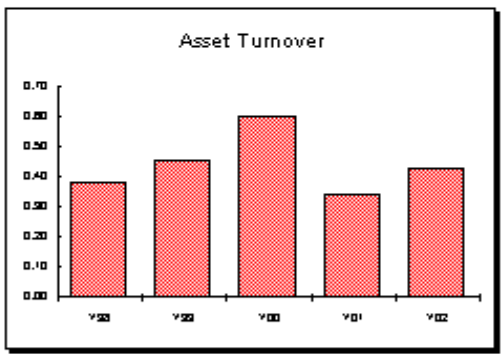
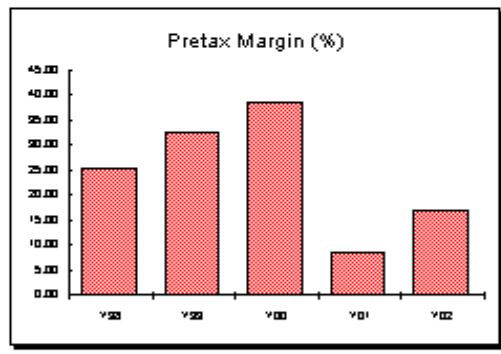
需要解答的問題

Microsoft Excel interface showing the formula bar with 'Set Size = 182' and a dropdown menu listing stock tickers such as '201395 - TAIWAN SEMICONDUCTOR MFG CO'.

TAIWAN SEMICONDUCTOR MFG CO
In Millions of NEW TAIWAN DOLLAR
 SIC: 3674 SEMICONDUCTOR, RELATED DEVICE
 Fiscal Year End: 12

DUPONT ANALYSIS

	Pretax Margin	X	Asset Turnover	=	Pretax ROA	X	Leverage	X	1-Tx Rate	=	ROE
Y98	25.12		0.36		9.54		1.73		1.13		19.93
Y99	32.36		0.45		14.58		1.58		1.02		23.96
Y00	36.45		0.60		23.05		1.45		1.02		34.04
Y01	8.57		0.34		2.93		1.40		1.35		5.51
Y02	16.77		0.43		7.19		1.36		0.79		7.50



Excel Template

ANNUAL BALANCE SHEET ANALYSIS

Ticker: MHP **MCGRAW-HILL COMPANIES** **SIC:** 2731 **BOOKS:** PUBG, PUBG & PRINTING
Exchange: New York Stock Exchange **1221 Avenue Of The A New York** **NY** **10020-1095** **212-512-2000**

BALANCE SHEET ANALYSIS

	Cash & Equivalents	Accounts Receivable	Current Assets	Accounts Payable	Current Liabilities	Working Capital	PPE	- Deprec	= Net PPE	Invest-ments	Other LT + Assets	Total = Assets
Y98	10.5	954.9	1428.8	323.2	1291.5	137.3	914.80	550.78	364.0	79.39	1915.96	3788.14
Y99	6.5	1052.6	1553.7	342.9	1525.5	28.3	993.70	563.30	430.4	86.00	2018.67	4088.80
Y00	3.2	1095.1	1801.7	313.3	1780.8	20.9	1046.37	614.46	431.9	95.86	2601.99	4931.44
Y01	53.5	1038.3	1812.9	339.5	1876.4	-63.4	1078.73	623.79	454.9	105.54	2787.77	5161.19
Y02	58.2	991.8	1674.3	303.4	1775.3	-101.0	1071.95	640.49	431.5	119.44	2806.97	5032.18
Y03	695.6	956.4	2256.2	306.2	1993.7	262.4	1131.43	664.10	467.3	0.00	2670.59	5394.07
Y04	680.6	1051.4	2447.8	318.3	1968.7	479.2	1195.79	682.73	513.1	0.00	2902.09	5862.99
Y05	748.8	1114.3	2590.9	336.3	2224.8	366.1	1299.51	772.76	526.8	0.00	3278.12	6395.81
Y06	353.5	1237.3	2257.9	372.5	2468.0	-210.1	1397.54	855.32	542.2	0.00	3242.73	6042.89
Y07	396.1	1189.2	2333.0	388.0	2656.9	-323.8	1614.05	953.28	660.8	0.00	3363.54	6357.34
Q1Y08	396.7	966.0	2204.1	360.9	2666.4	-462.3	1621.23	965.00	656.2		3406.53	6266.85

** Latest Quarter

	Short Term Debt	Long Term + Debt	Total Debt	Common Stock	Capital + Surplus	Retained + Earnings	Treasury - Stock	Common = Equity	Preferred + Stock	Total Shrhldr = Equity	Shares Outstanding
Y98	75.5	452.1	527.6	102.9	37.9	1645.6	234.7	1551.8	0.0	1551.8	394.2
Y99	181.7	354.8	536.4	205.8	10.3	1839.1	363.7	1691.5	0.0	1691.5	391.4
Y00	227.8	817.5	1045.4	205.8	31.3	1994.8	470.9	1761.0	0.0	1761.0	388.6
Y01	223.0	833.6	1056.5	205.8	49.3	2165.5	566.8	1853.9	0.0	1853.9	386.4
Y02	119.4	458.9	578.3	205.9	61.3	2568.1	669.5	2165.8	0.0	2165.8	383.7
Y03	26.0	0.4	26.3	205.9	68.6	3083.7	801.1	2557.1	0.0	2557.1	380.8
Y04	4.6	0.5	5.1	205.9	93.8	3648.6	963.8	2984.5	0.0	2984.5	379.6
Y05	2.9	0.3	3.3	411.7	-14.7	4118.1	1402.0	3113.1	0.0	3113.1	372.7
Y06	2.4	0.3	2.7	411.7	114.6	4705.9	2552.6	2679.6	0.0	2679.6	354.0
Y07	0.0	1197.4	1197.4	411.7	169.2	5539.1	4513.4	1606.7	0.0	1606.7	322.4

公司基本財報

Microsoft Excel - Book2

檔案(F) 編輯(E) 檢視(V) 插入(I) 格式(O) 工具(T) 資料(D) 視窗(W) S&P 說明(H) 輸入需要解答的問題

SnagIt Window

	A	B	C	D	E	F	G	H	I	J	K	L
1		COMPANY HIGHLIGHTS										
2		In Billions of JAPANESE YEN										
3	SONY CORP		GVKEY:	9818								
4	Industry:	Consumer Electronics		Issue Description:		ORD NPV (BELG CERT)						
5	Entity Type	Industrial		CUSIP:								
6	Country:	Japan		Common Shareholders (Thou) @NA								
7	ISO Code:	JPY		Exchange:	Belgium - Brussels							
8	ISO Curren	EUR										
9	-----											
10	Report Formats											
11	Income Sta	1.000	Balance Sheet	GO	Cash Flow	10.000						
12	-----											
13	Valuation	Prices		Latest		Latest						
14	Price/Earnin @NA	High	6,419.149	Sales	8,871.414	Assets	12,552.740					
15	Price/Book @NA	Low	6,022.457	EBIT	374.482	Debt	1,084.162					
16	Price/Sales @NA	Close	6,319.503	Net Income	369.435	Equity	3,465.089					
17	Dividend	0.000	% Change	(1.621)	EPS @NA	Shares Out @NA						
18	Dividend Y @NA	EPS-Estimate @NA	Market Val	5,298,095.859								
19				Issue Market Val @NA								
20	-----											
21	Miscellaneous											
22	ROE	10.662	Current Ratio	1.245	Employees @NA							
23	ROA	2.943	Quick Ratio	0.647	Sales/Empl @NA							
24	Debt/Equity	21.040	X Interest Earn @NA	Net Inc/Em @NA								
25	NPM	4.164	Assets/Employ @NA									
26	-----											

Sheet4 / Sheet1 / Sheet2 / Sheet3 /

自訂報表

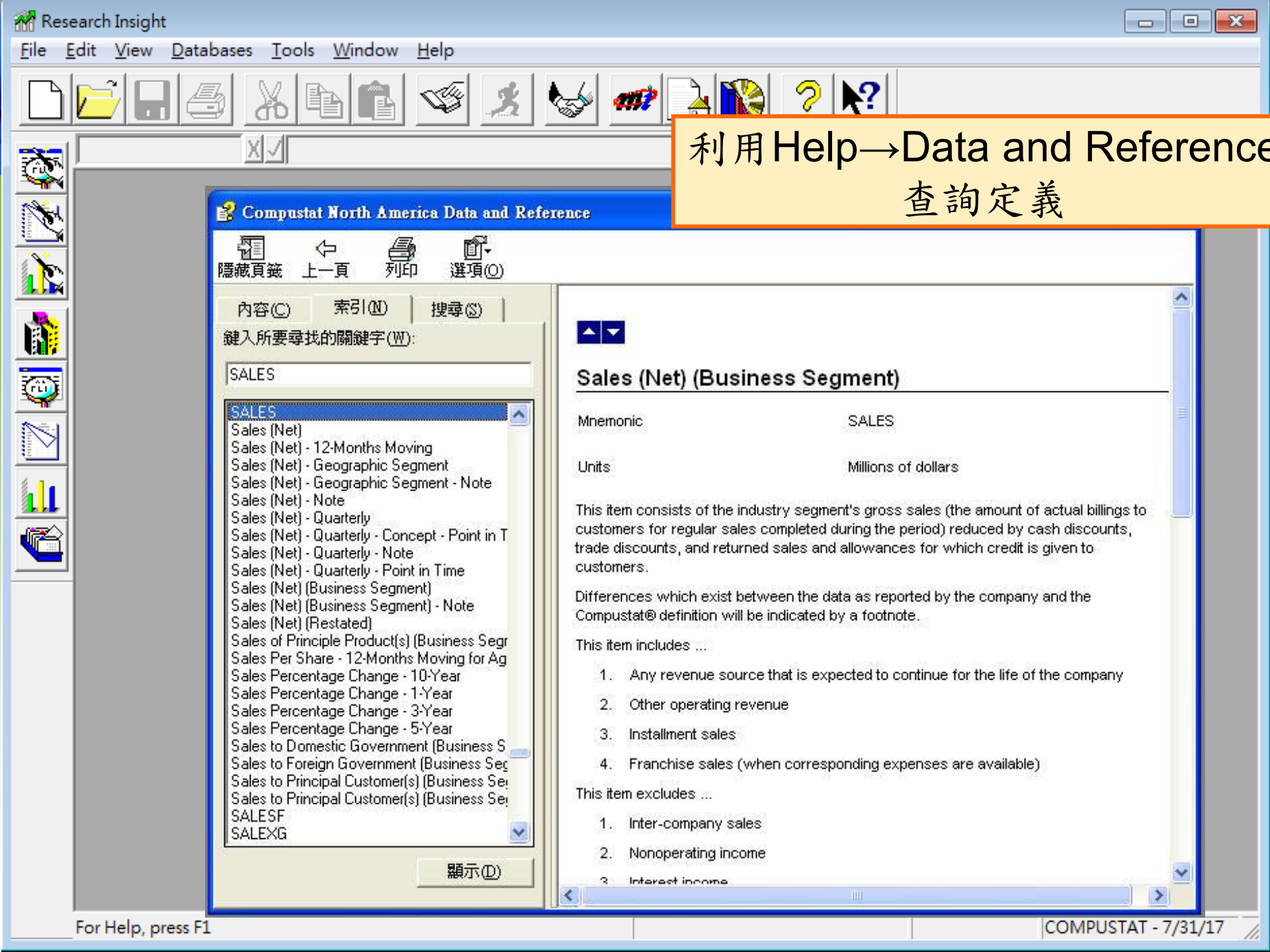
	A	B	C	D	E	F	G	H
1								
2	Company Name	Price Close - Monthly[-12M]	Price Close - Monthly[-11M]	Price Close - Monthly[-10M]	Price Close - Monthly[-9M]	Price Close - Monthly[-8M]	Price Close - Monthly[-7M]	Price Close - Monthly[-6M]
3	ACTEL CORP	13.970	13.910	11.800	11.250	10.730	11.390	10.960
4	ADTEC ENGINEERING CO LTD	800.000	785.000	800.000	601.000	529.000	500.000	430.000
5	ADV MICROELECTRONIC PROD INC	10.400	12.800	19.000	15.000	17.150	15.000	12.950
6	ADVANCED ANALOG TECH INC	220.866	248.819	254.331	160.000	164.000	171.500	141.000
7	ADVANCED ENERGY INDS INC	24.540	22.660	17.710	16.230	15.100	16.000	14.510
8	ADVANCED MICRO DEVICES	14.270	14.300	13.540	13.000	13.200	13.080	9.760
9	ADVANCED POWER ELECTRONICS	47.972	62.512	67.883	53.800	51.800	40.800	40.800
10	ADVANCED SEMICON ENGINEERING	33.103	38.983	37.459	32.650	35.800	38.900	33.050
11	ADVANCED SEMICONDUCTOR MFG	0.774	0.760	0.735	0.600	0.512	0.453	0.371
12	ADVANCED SYSTEMS AUTOMATION	0.055	0.085	0.115	0.055	0.070	0.060	0.045
13	ADVANTEST CORP	5,200.000	5,370.000	4,640.000	4,260.000	3,580.000	3,310.000	3,150.000
14	AEM HOLDINGS LTD	0.190	0.225	0.205	0.155	0.170	0.165	0.135
15	AIC CORP BHD	0.530	0.610	0.610	0.530	0.550	0.620	0.630
16	AIMHIGH GLOBAL CORP	410.000	355.000	320.000	455.000	520.000	885.000	755.000
17	AIMTRON TECHNOLOGY	68.000	73.200	69.500	56.500	54.800	51.200	42.000
18	AIREX INC	74.000	87.000	74.000	78.000	76.000	79.000	74.000
19	AIXTRON AG	5.930	6.510	6.540	6.060	6.830	8.130	8.540
20	AKN TECHNOLOGY BHD	0.470	0.490	0.915	0.840	0.840	0.780	0.630
21	ALCOR MICRO CORP	201.928	234.674	201.019	147.000	159.500	132.000	97.000
22	ALI CORP	69.546	76.977	121.944	119.563	127.500	105.000	73.500

【進階功能】



❖ 利用 Help 查詢 Data Item

- ❖ 如何查詢歷史資料？
- ❖ 如何查詢相同國家的公司？
- ❖ 如何利用 CUSIP、TIC、GVKey 匯入公司？
- ❖ 如何轉換幣值？
- ❖ 如何查詢圖表？



利用 Help → Data and Reference
查詢定義

Compustat North America Data and Reference

隱藏頁籤 上一頁 列印 選項(O)

內容(C) 索引(I) 搜尋(S)

鍵入所要尋找的關鍵字(W):

SALES

- SALES
- Sales (Net)
- Sales (Net) - 12-Months Moving
- Sales (Net) - Geographic Segment
- Sales (Net) - Geographic Segment - Note
- Sales (Net) - Note
- Sales (Net) - Quarterly
- Sales (Net) - Quarterly - Concept - Point in T
- Sales (Net) - Quarterly - Note
- Sales (Net) - Quarterly - Point in Time
- Sales (Net) (Business Segment)
- Sales (Net) (Business Segment) - Note
- Sales (Net) (Restated)
- Sales of Principle Product(s) (Business Segr
- Sales Per Share - 12-Months Moving for Ag
- Sales Percentage Change - 10-Year
- Sales Percentage Change - 1-Year
- Sales Percentage Change - 3-Year
- Sales Percentage Change - 5-Year
- Sales to Domestic Government (Business S
- Sales to Foreign Government (Business Seg
- Sales to Principal Customer(s) (Business Se
- Sales to Principal Customer(s) (Business Se
- SALESF
- SALEXG

顯示(D)

Sales (Net) (Business Segment)

Mnemonic SALES

Units Millions of dollars

This item consists of the industry segment's gross sales (the amount of actual billings to customers for regular sales completed during the period) reduced by cash discounts, trade discounts, and returned sales and allowances for which credit is given to customers.

Differences which exist between the data as reported by the company and the Compustat® definition will be indicated by a footnote.

This item includes ...

1. Any revenue source that is expected to continue for the life of the company
2. Other operating revenue
3. Installment sales
4. Franchise sales (when corresponding expenses are available)

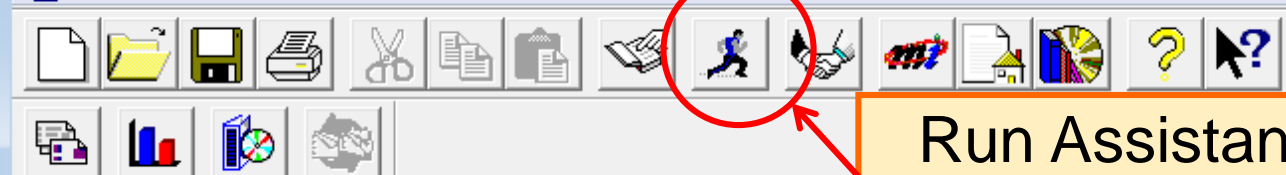
This item excludes ...

1. Inter-company sales
2. Nonoperating income
3. Interest income



進階操作說明

- ❖ 利用 Help 查詢 Data Item
- ❖ 如何查詢歷史資料？**
- ❖ 如何查詢相同國家的公司？
- ❖ 如何利用 CUSIP、TIC、GVKey 匯入公司？
- ❖ 如何轉換幣值？
- ❖ 如何查詢圖表？



Run Assistant
修改檢索條件

Show

- Formula
- Report
- Chart
- Report & Chart

Companies

Ticker

Name

Prev Next

MSFT

MICROSOFT CORP ANNUAL CASH STATEMENT BY ACTIVITY

TIC: SIC: GIC: OPE: Inc: De: Ex: De: Eq: Sa: Fu: Fur: Wo: Cas: INVE: Cap: Sal: Ac: Inc: Sal: FINA: Cur: Iss: Lor: Pur: PURCHASE OF COMMON AND PREFERRED STOCK

Run Assistant (Money Management)

Screen | Set | Report Time Periods | Screen - Classic View

Time Period

Current Period Select Period

Alignment Periods

Annual	Calendar	C12
Quarterly	Absolute Calendar	0Q
Monthly	Relative	0M
Weekly	Relative	0W
Daily	Relative	0D

Check this option to enable all alignment periods for the report.

Enable all alignment periods.

確定 取消 說明

設定年代



Show

- Formula
 Report
 Chart
 Report & Chart

Companies

MICROSOFT CORP

TICKER: MSFT

SIC: 7372

GICS: 45103020

ANNUAL CASH STATEMENT BY ACTIVITY

(\$ MILLIONS)

	Jun12	Jun11	Jun10	Jun09	Jun08
OPERATIONS					
Income Before Extraordinary Items	16,978.000	23,150.000	18,760.000	14,569.000	17,681.000
Depreciation and Amortization	2,967.000	2,766.000	2,673.000	2,562.000	2,056.000
Extraordinary Items and Discontinued Operations	0.000	0.000	0.000	0.000	0.000
Deferred Taxes	954.000	2.000	-220.000	762.000	935.000
Equity in Earnings @CF	@CF	@CF	@CF	@CF	@CF
Sale of Property, Plant, and Equipment and Sale of Investments @CF	@CF	@CF	@CF	@CF	-572.000
Funds from Operations - Other	10,901.000	4,079.000	2,199.000	1,322.000	3,947.000
Funds from Operations - Total @NA	@NA	@NA	@NA	@NA	@NA
Working Capital Changes - Other - Inc (Dec) @NA	@NA	@NA	@NA	@NA	@NA
Cash Dividends	6,385.000	5,180.000	4,578.000	4,468.000	4,015.000
INVESTMENTS					
Capital Expenditures	2,305.000	2,355.000	1,977.000	3,119.000	3,182.000
Sale of Property, Plant, and Equipment	0.000	0.000	0.000	0.000	0.000
Acquisitions @CF	@CF	71.000	245.000	868.000	8,053.000
Increase in Investments	57,250.000	35,993.000	30,168.000	36,850.000	20,954.000
Sale of Investments	45,275.000	22,777.000	22,578.000	25,997.000	27,729.000
FINANCING					
Current Debt - Changes	0.000	-186.000	-991.000	1,178.000	0.000
Issuance of Long-Term Debt	0.000	6,960.000	4,167.000	4,796.000	0.000
Long-Term Debt - Reduction	0.000	814.000	2,986.000	228.000	0.000
Purchase of Common and Preferred Stock	5,029.000	11,555.000	11,269.000	9,353.000	12,533.000



進階操作說明

- ❖ 利用 Help 查詢 Data Item
- ❖ 如何查詢歷史資料？
- ❖ 如何查詢相同國家的公司？**
- ❖ 如何利用 CUSIP、TIC、GVKey 匯入公司？
- ❖ 如何轉換幣值？
- ❖ 如何查詢圖表？



Companies

Look Up

Initial Set



\$G+\$F

Change Set

Find Similar Companies

- Economic Sector
- GICS-Sector
- GICS-Group
- GICS-Industry
- GICS-Sub-Industry
- Country
- Don't Find Similar Companies

Period Selection

Current Period

Open Screen...

Clear

Classic View

Reset

Population Particulars | Company Specifics | Growth | Market

Non-Utility Company = True

Primary Trading Issue = True

Country of Incorporation = AGO-Angola

- TWN-Taiwan
- TUN-Tunisia
- TUR-Turkey
- TWN-Taiwan
- TZA-Tanzania
- UGA-Uganda
- URK-Ukraine
- URY-Uruguay
- USA-United States of America
- VN-Venezuela
- BG-British Virgin Islands
- VI-Virgin Islands, U.S.
- VN-Vietnam
- VUT-Vanuatu
- ZAF-South Africa
- ZMB-Zambia
- ZWE-Zimbabwe

利用指標群組設定條件後
篩選符合的公司

下拉式選單選取國家



進階操作說明

- ❖ 利用 Help 查詢 Data Item
- ❖ 如何查詢歷史資料？
- ❖ 如何查詢相同國家的公司？
- ❖ 如何利用 **CUSIP**、**TIC**、**GVKey** 匯入公司？
- ❖ 如何轉換幣值？
- ❖ 如何查詢圖表？



	A1		
	A	B	C
1	CUSIP		
2	69418W		
3	69033T		
4	169417		
5	69033T		
6	50736Q		
7	30733T		
8	43857W		
9	50730A		
10	4614FI		
11	86801M		
12	86801M		
13	04516D		
14	46145I		
15	53674Q		
16	16941W		
17	69412D		
18	30023W		
19	16993N		
20	44328Z		
21	46145M		

1. 將所需匯入的公司建立Excel檔案

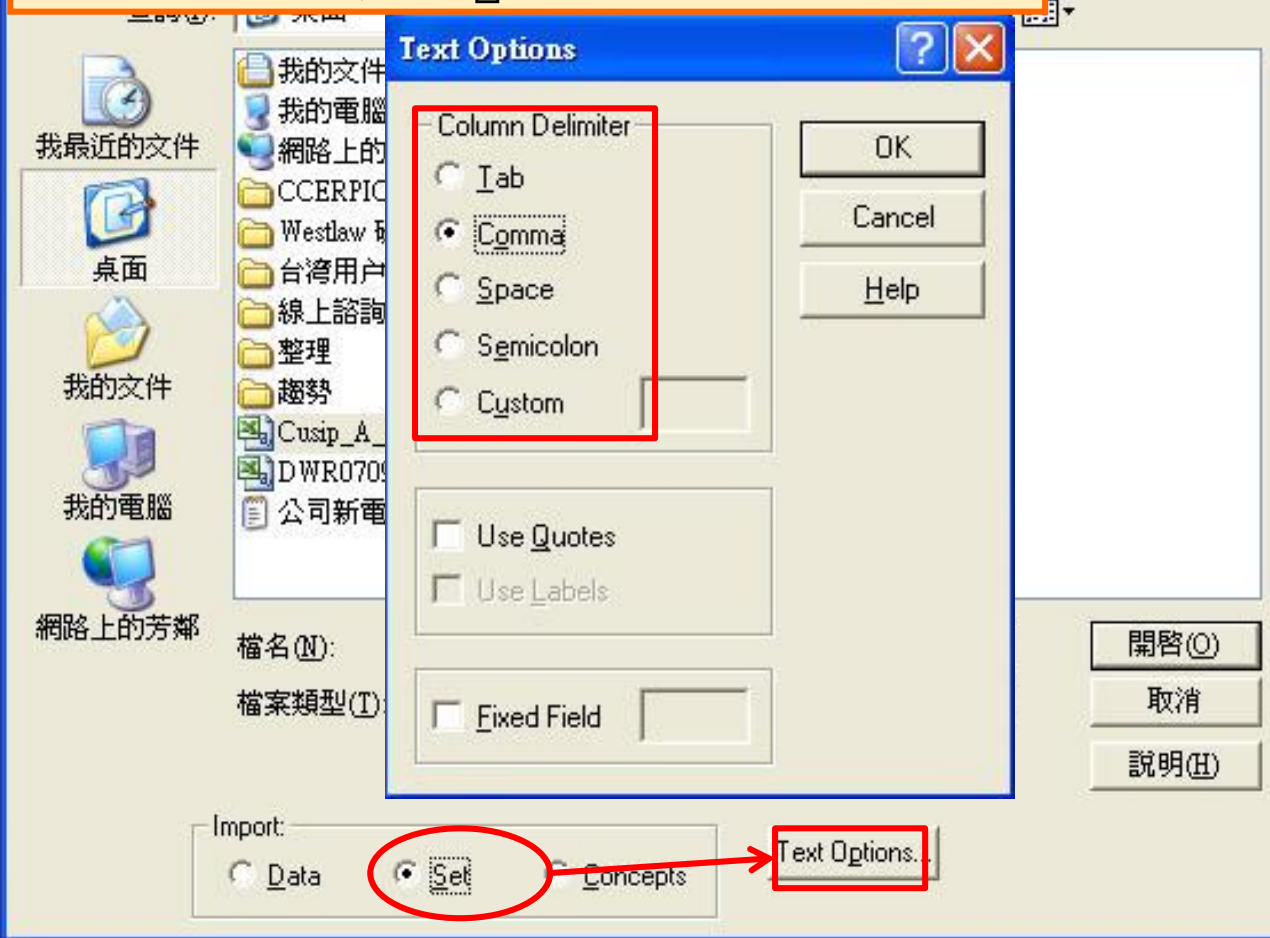
2. 若公司代碼為CUSIP，在(A1)中輸入CUSIP

3. 將檔案另存成.csv格式



4. 開啟 Research Insight，選擇 File→Import

5. 選擇 Import Set，且設定『欄位間距的符號』



Status

Filename: D:\Karen檔案\SP\QA\Cusip_A_T.csv
Database: COMPUSTAT.
Import Key: CUSIP.

6. 匯入檔案後，另外將公司儲存成群組即可

Processing ..



	TIC	Name
1	AVP	AVON PRODUCTS
2	BIWC	BIW CABLE SYSTEMS INC
3	BDK	BLACK & DECKER CORP
4	XI0208	METAL FABRICATORS-SUPER
5	3NETX	NETLOJIX COMMUNICATIONS INC
6	NIC.1	NICOLET INSTRUMENT
7	3SMWF	SEAMLESS WI-FI INC
8		
9		
10		
11		
12		
13		
14		
15		
16		
17		
18		
19		

IMPOR T08.ERR - 記事本

檔案(F) 編輯(E) 格式(O) 檢視(V) 說明(H)

Time and Date: 14:36:25 07/17/08 Task Scheduler: D:\Karen檔案\SP\QA\Cusip_A_T.csv

69418W - No record with the key '69418W' was found in the database.
69033T - No record with the key '69033T' was found in the database.
169417 - No record with the key '169417' was found in the database.
69033T - No record with the key '69033T' was found in the database.
50736Q - No record with the key '50736Q' was found in the database.
30733T - No record with the key '30733T' was found in the database.
43857W - No record with the key '43857W' was found in the database.
50730A - No record with the key '50730A' was found in the database.
4614FI - No record with the key '4614FI' was found in the database.
86801M - No record with the key '86801M' was found in the database.
86801M - No record with the key '86801M' was found in the database.



進階操作說明

- ❖ 利用 Help 查詢 Data Item
- ❖ 如何查詢歷史資料？
- ❖ 如何查詢相同國家的公司？
- ❖ 如何利用 CUSIP、TIC、GVKey 匯入公司？
- ❖ 如何轉換幣值？**
- ❖ 如何查詢圖表？



Research Assistant...
Report Assistant...
Chart Assistant...

Look Up...

Company Highlights...

Library...

Market Insight...

Company Home Page...

Task Scheduler...

Export Concepts...

Customize...

Options...

Options

Report | Styles | Adjustment Factors | Data Code Settings

Currency Translation | Period Reference | Screening | Internet

Translated or as-reported

- Translate into current company currency
- Translate into target currency
- Use as-reported historical currency

Target Currency: TWD | Primary Currency: USD | Description...

Period Translation Rate

- Use the historical translation rate
- Use the current translation rate

確定 | 取消 | 套用(A) | 說明

選擇幣值轉換

選擇幣別

若無法轉成『Target Currency』，則需先轉成『Primary Currency』再執行『Target Currency』



進階操作說明

- ❖ 利用 Help 查詢 Data Item
- ❖ 如何查詢歷史資料？
- ❖ 如何查詢相同國家的公司？
- ❖ 如何利用 CUSIP、TIC、GVKey 匯入公司？
- ❖ 如何轉換幣值？
- ❖ 如何查詢圖表？

開啟圖表



開啟內建圖表



File Open (Money Management)



Open

Use right mouse click to edit selected item.

- [-] S&P Charts
 - [-] Fundamental
 - Capital Structure - Quarterly
 - Comparative Compound Growth-Sales 5 Yr
 - Gross Profit Margin vs. Sales
 - Receivables Turnover vs. Sales
 - Sales vs. Income Before Extra Items
 - [+] Line of Business
 - [+] Market
 - [+] Peer
 - [+] Pricing
 - User
- [+] S&P Reports
- [+] S&P Screens
- S&P Sets

選擇圖表類型

Browse...

New Chart

Screen Open mode

 Research Assistant Classic View

Details

< 上一步(B)

完成

取消

說明

自訂圖表

Research Insight - [Report1]

File Edit Report View Databases Tools Window Help

Chart Assistant - Step 1 (Money Management)

Chart Style

- Area
- Bar
- High, Low, Close
- High, Low, Close, Volume
- Line
- Pie

Companies per Chart

- One Company
- Multiple Companies

Periods

- Current Period
- Historical Analysis

Time Reference

- Annual Monthly Daily
- Quarterly Weekly

Company A

Period	Sales-Net	Cost of Goods Sold	SG&A Expense	Net Income (Loss)
Jun93	13500.00	8000.00	4000.00	1500.00
Jun94	14500.00	8500.00	4200.00	1800.00
Jun95	15500.00	9000.00	4500.00	2000.00
Jun96	17000.00	10000.00	5000.00	2000.00
Jun97	18000.00	10500.00	5500.00	2000.00

Price Close - Monthly

Price High - Monthly

Price Low - Monthly

選取圖表類型

< 上一步(B) 下一步(N) > 取消 說明

0.00 Oct16 Nov16 Dec16 Jan17 Feb17 Mar17 Apr17 May17 Jun17 Jul17

0Y, 0Q, 0M, 0W, 0D 1 / 1 COMPUSTAT - 7/31/17

【常見Q&A】





Q1：如何查詢信評資料？

A：可在「**Company Highlight**」及
「**Company Description**」兩個內建報表中
取得。(北美版)



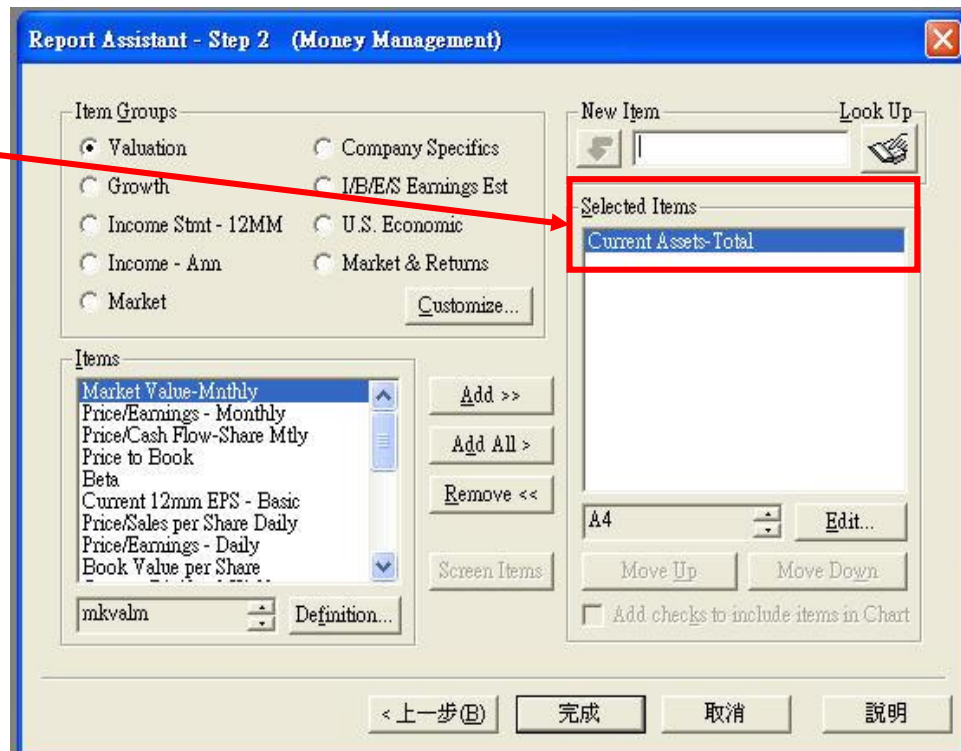
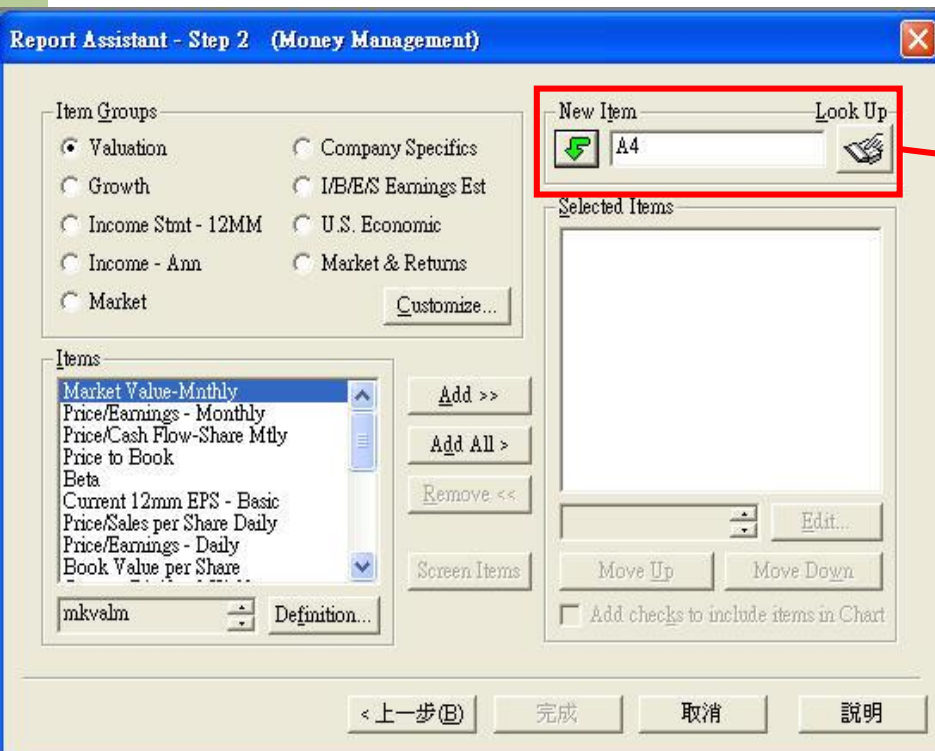
Q2：如何查詢破產原因？

A：變數名稱：

Rsrch Co Reason for Deletion (DLRSN)

Q3：如何查詢國外文獻中的S&P代碼？

A：在Report Assistant – Step2，New Item的欄位中輸入後，即可查詢。





Q4：資料庫中是否有公司股權、董事會結構的資料，例如：獨立董事人數或董事會人數？

A：資料庫中沒有直接相關的資料，但在北美版有一份內建報表為Institutional Holdings，內有機構持有人的資料。



Support Website

❖ TBMC 漢珍公司

(<http://www.tbmc.com.tw/zh-tw>)

- 產品簡介、相關連結
- **Q&A Support**：洽詢 漢珍公司 Compustat 相關問題
 - 唐 瑩 小姐
Tel：02-27361058 # 268；Email：josie@tts.tbmc.com.tw
 - 黃政豪 先生
Tel：02-27361058 # 269；Email：howard@tts.tbmc.com.tw

❖ S&P Website (<http://www.spcapitaliq.com/our-capabilities/our-capabilities.html?product=compustat-research-insight>)

- **Q&A Support**：洽詢 S&P 公司 Compustat 相關問題
 - Email：clientsupport@capitaliq.com